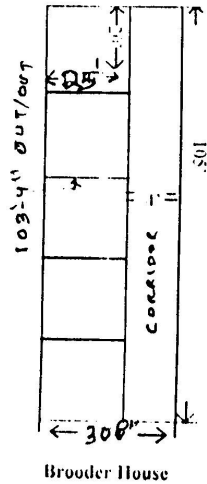


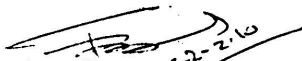
APPROVED
Line Plan of Brooder Shed

Installation, Wall - 3"
with perforated mesh - 2"x1"

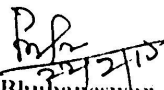


Reference -

- | | |
|-----------------------------------------------------------|--------|
| 1) The plinth height from GL..... | = 2'6" |
| 2) RCC Projection at plinth level (for rat & snake proof) | = 1'6" |
| 3) Height of the wall above plinth level | = 2' |
| 4) Roof extension both side of the Shed | = 2'6" |
| 5) Top Height of the Pillar, above plinth level | = 8'6" |
| 6) Top height of the Gable | = 13' |


Asst. Engineer
AH & VS, Orissa, Cuttack


Deputy Director, Poultry
AH & VS, Orissa, Cuttack


CPDO, Bhubaneswar
निदेशक/Director
Govt. of India
Central Poultry Dev. Organisation (C.P.D.O.)
Bhubaneswar


Director,
AH & VS, Orissa, Cuttack